

Preparation unit—GA Series

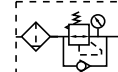
GAFR Series filter & regulator



Symbol

No reflux valve is attached

Reflux valve is attached



Product feature

1. Circular square pressure gauge which with clip and magnifier is used to save installation space.
2. The pressed-in self-locking mechanism can prevent the abnormal movement of the set pressure caused by external interfere.
3. Balanced design is adopted for the pressure adjustment mechanism.
4. Unique diversion structure spins the air flowing through to effectively separate the liquid from the air and reliably filter the solid grain.
5. The filtering grade includes 5 μm and 40 μm (optional).
6. Two drain types are available: semi-auto drain and automatic drain.
7. Three material of bowl are available: PC, Nylon and metal.
8. The bracket can be selected for installation.

Specification

| Model | GAFR200-06 | GAFR200-08 | GAFR300-08 | GAFR300-10 | GAFR300-15 | GAFR400-10 | GAFR400-15 | GAFR500-20 | GAFR600-20 | GAFR600-25 |
|------------------------|------------------------|------------|------------|------------|------------|------------|------------|------------|------------|------------|
| Fluid | Air | | | | | | | | | |
| Port size [Note1] | 1/8" | 1/4" | 1/4" | 3/8" | 1/2" | 3/8" | 1/2" | 3/4" | 3/4" | 1" |
| Filtering grade | 40 μm or 5 μm | | | | | | | | | |
| Pressure range | 0.15~0.9MPa(20~130psi) | | | | | | | | | |
| Max. pressure | 1.0MPa(145psi) | | | | | | | | | |
| Proof pressure | 1.5MPa(215psi) | | | | | | | | | |
| Temperature range | -5~70°C(Unfreeze) | | | | | | | | | |
| Capacity of drain bowl | 25CC | | | 60CC | | | 100CC | | 108CC | 205CC |
| Weight | 290g | | | 500g | | | 880g | | 950g | 1880g |

[Note1] G thread is available.

Ordering code

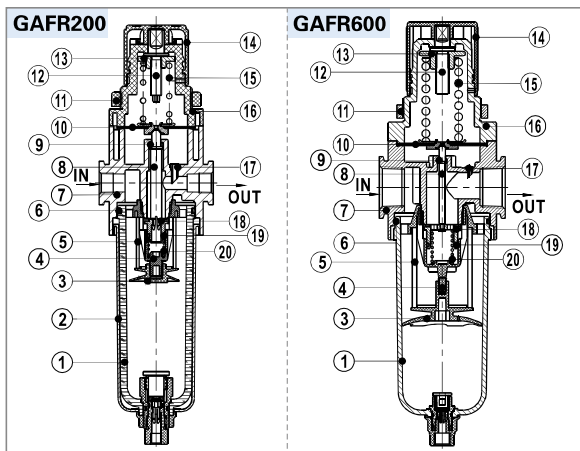
GAFR300 10 S W G K

① ② ③ ④ ⑤ ⑥ ⑦ ⑧ ⑨ ⑩

| ① Model | ② Bowl material | ③ Port size | ④ Drain type | ⑤ Type code | ⑥ Accessories | ⑦ Pressure gauge | ⑧ Filtering grade | ⑨ Thread type | ⑩ Code of reflux valve |
|--|-----------------|-------------|---|--|---------------------------------|--|---------------------------|--------------------------|---|
| GAFR200:GA200 Series Filter & regulator | Blank: PC bowl | 06: 1/8" | Blank: Semi-auto drain +Manual drain A: Automatic drain | S: Standard L: Lower pressure [Note1] | Blank: Bracket J: No bracket | Blank: Circular N: No gauge [Note2] | Blank: 40μm W: 5μm | G: G Thread (bar/MPa) | Blank: No reverse flow valve is attached K: Reverse flow valve is attached [Note2] |
| GAFR300:GA300 Series Filter & regulator | | 08: 1/4" | | | | | | | |
| GAFR400:GA400 Series Filter & regulator | 10: 3/8" | | | | | | | | |
| GAFR500:GA500 Series Filter & regulator | 15: 1/2" | | | | | | | | |
| GAFR600:GA600 Series Filter & regulator | 20: 3/4" | | | | | | | | |
| | C: Metal bowl | 15: 1/2" | | | | | | | |
| | N: Nylon bowl | 20: 3/4" | | | | | | | |
| | C: Metal bowl | 25: 1" | | S: Standard | | | | | |

[Note1] The maximum work pressure of lower pressure type is 0.4MPa(58psi); [Note2] Please refer to page 201 for details of sealing plate Installation and reflux valve.

Inner structure

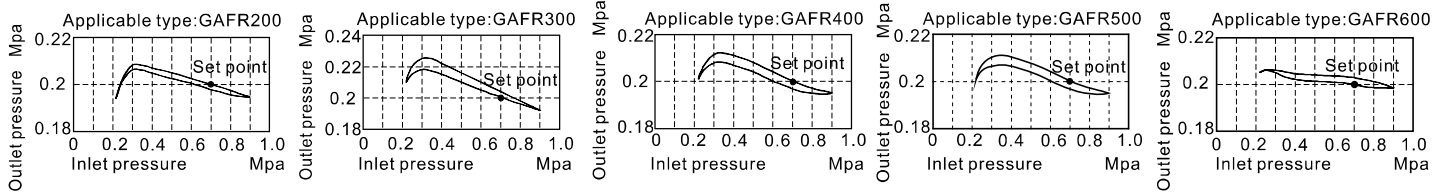


| No. | Item | Material |
|-----|--------------------------|--------------------------------------|
| 1 | Drain bowl | Aluminum alloy \ PC \ Nylon |
| 2 | Meter cover | SPCC |
| 3 | Umbrella baffle | High viscosity POM |
| 4 | Air guider | High viscosity POM |
| 5 | Filter core | HDPE |
| 6 | O-ring | NBR |
| 7 | Body of filter-regulator | Aluminum alloy |
| 8 | Adjusting spool | Brass(GAFR600)\POM(others) |
| 9 | O-ring | NBR |
| 10 | Diaphragm | NBR |
| 11 | Fixation ring cap | Aluminum alloy (GAFR600)\POM(others) |
| 12 | Adjusting spindle | Steel |
| 13 | Regulator nut | Steel |
| 14 | Pressure knob | POM |
| 15 | Spring | SWPB |
| 16 | Adjusting seat | Aluminum alloy (GAFR600)\POM(others) |
| 17 | Feedback tube | POM |
| 18 | Adjusting plug | Brass & Rubber |
| 19 | O-ring | NBR |
| 20 | Spring | SWPB |

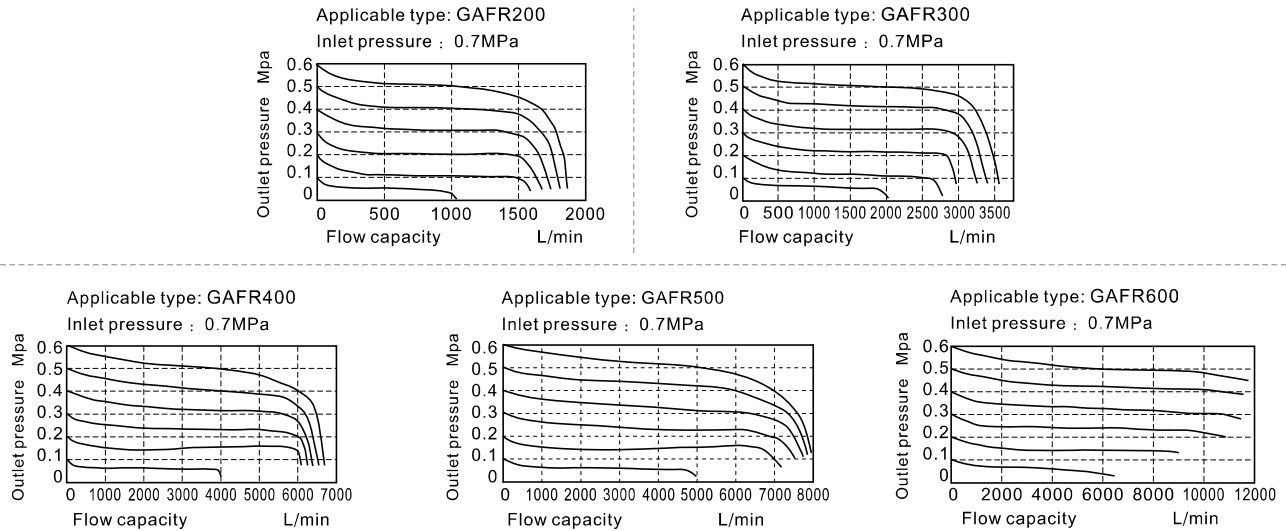
Preparation unit—GA Series

GAFR Series filter & regulator

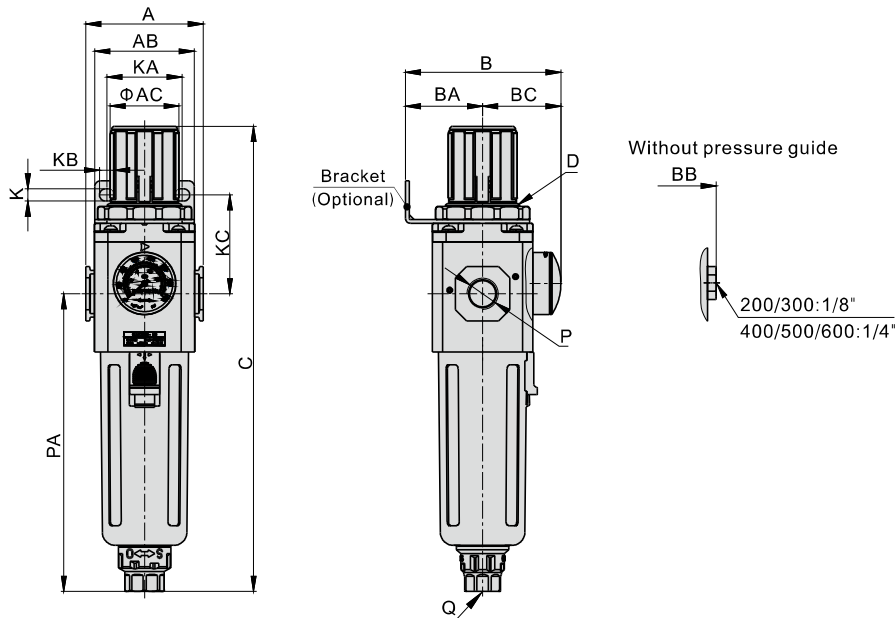
Pressure chart



Flow chart



Dimensions



| Model\Item | A | AB | AC | B | BA | BB | BC | C | D | K | KA | KB | KC | P | PA | Q |
|------------|------|----|----|------|----|------|------|-------|---------|-----|----|------|------|------|-------|--------|
| GAFR200-06 | 52.5 | 55 | 31 | 69 | 30 | 55.5 | 39 | 192.5 | M33x1.5 | 5.4 | 34 | 15.4 | 52 | 1/8" | 120 | M5X0.8 |
| GAFR200-08 | 52.5 | 55 | 31 | 69 | 30 | 55.5 | 39 | 192.5 | M33x1.5 | 5.4 | 34 | 15.4 | 52 | 1/4" | 120 | M5X0.8 |
| GAFR300-08 | 62.5 | 53 | 38 | 82.5 | 41 | 71.5 | 41.5 | 247 | M40x1.5 | 6.5 | 40 | 8 | 52.5 | 1/4" | 158 | G1/4 |
| GAFR300-10 | 62.5 | 53 | 38 | 82.5 | 41 | 71.5 | 41.5 | 247 | M40x1.5 | 6.5 | 40 | 8 | 52.5 | 3/8" | 158 | G1/4 |
| GAFR300-15 | 62.5 | 53 | 38 | 82.5 | 41 | 71.5 | 41.5 | 247 | M40x1.5 | 6.5 | 40 | 8 | 52.5 | 1/2" | 158 | G1/4 |
| GAFR400-10 | 80 | 72 | 52 | 99 | 50 | 88 | 49 | 285.5 | M55x2.0 | 8.5 | 55 | 11 | 57 | 3/8" | 177.5 | G1/4 |
| GAFR400-15 | 80 | 72 | 52 | 99 | 50 | 88 | 49 | 285.5 | M55x2.0 | 8.5 | 55 | 11 | 57 | 1/2" | 177.5 | G1/4 |
| GAFR500-20 | 82 | 72 | 52 | 100 | 50 | 89 | 50 | 299.5 | M55x2.0 | 8.5 | 55 | 11 | 57 | 3/4" | 191.5 | G1/4 |
| GAFR600-20 | 100 | 90 | 59 | 128 | 70 | 117 | 58 | 336.5 | M62x1.5 | 11 | 66 | 13 | 76 | 3/4" | 205 | G1/4 |
| GAFR600-25 | 100 | 90 | 59 | 128 | 70 | 117 | 58 | 336.5 | M62x1.5 | 11 | 66 | 13 | 76 | 1" | 205 | G1/4 |