

# Preparation unit——G Series

## GA series of gas-distribution block



### Product feature

1. It is installed between GA series regulator (or filter & regulator) and G series Lubricator. The air flow is divided by the device that one enters Lubricator to supply oil for lubrication and the other (the second way) directly enters the equipment.
2. Several kinds of bracket can be selected to connect regulator and lubricator. Optional brackets are type T, type L and type U.

### Specification

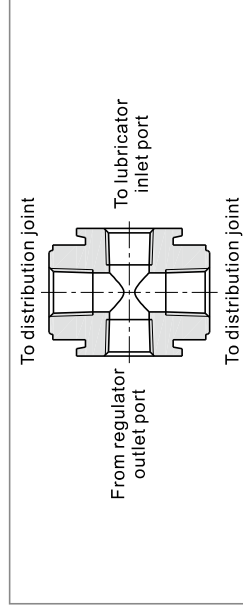
Model	GA200-06	GA200-08	GA300-08	GA300-10	GA400-10	GA400-15	GA600-20	GA600-25
Fluid	Air							
Port size [Note1]	1/8"	1/4"	1/4"	3/8"	3/8"	1/2"	3/4"	1"
Way number	Four							
Pressure range	0~1.0MPa(0~145psi)							
Proof pressure	1.5MPa(215psi)							
Temperature range	-20~70°C							

[Note 1] G thread is available.

### Ordering code

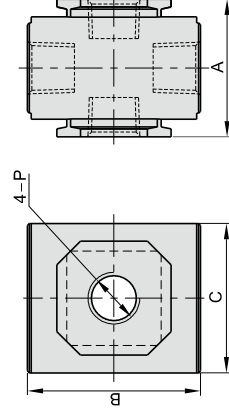
GA200 08 G		
① Model	② Port size	③ Thread type
GA200: 200 Series gas-distribution block	06: 1/8" 08: 1/4"	G: G
GA300: 300 Series gas-distribution block	08: 1/4" 10: 3/8"	
GA400: 400 Series gas-distribution block	10: 3/8" 15: 1/2"	
GA600: 600 Series gas-distribution block	20: 3/4" 25: 1"	

### Inner structure



Note : When it is used with F.R.L. combination, extra mounting bracket needed. Please refer to P198 for order detail.

### Dimensions



Model\Item	A	B	C	P
GA200 06	28.5	36	30	1/8"
GA200 08	28.5	36	30	1/4"
GA300 08	35	44	38	1/4"
GA300 10	35	44	38	3/8"
GA400 10	42	52	52	3/8"
GA400 15	42	52	52	1/2"
GA600 20	60	76	68	3/4"
GA600 25	60	76	68	1"