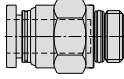


GPC series

Ordering code

GPC 6 01 □

① ② ③ ④

① Model	② Port size	③ Thread connection		④ Standard color	
GPC: Male connector (G thread) 	6: Φ6mm 8: Φ8mm 10: Φ10mm 12: Φ12mm	Thread connection M5: M5X0.8 01: G1/8 02: G1/4 03: G3/8 04: G1/2	Adaptable port size Φ6 Φ6, Φ8, Φ10, Φ12	Standard color Blank: Gray D: Black	Specification Release button: Gray Release button: Black

Specification

Operating pressure range	0~10kgf/cm²(0~1.0MPa)
Negative pressure	-750mmHg(10Torr)
Proof pressure	1.5MPa
Ambient and fluid temperature (°C)	-20~70
Applicable tubing	Soft nylon or polyurethane
Color	Gray/black

Table for interface port and tube O.D.

Product series	Thread type	Port size			
		Φ6	Φ8	Φ10	Φ12
GPC	M5	●			
	G1/8	●	●	●	●
	G1/4	●	●	●	●
	G3/8	●	●	●	●
	G1/2	●	●	●	●

Product feature

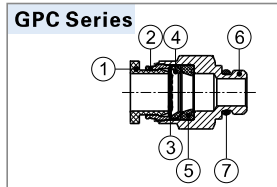
1. The compact appearance space saving.

2. Gray and black are optional for the release button.

3. The threaded portion is attached with a sealing gasket to prevent air leakage over the connection thread portion.



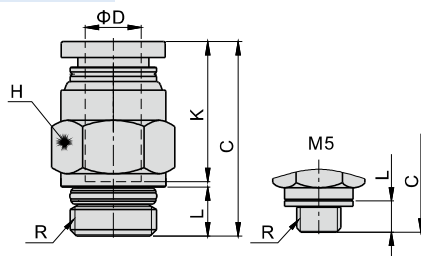
Inner structure



No.	Item	Material
1	Release button	POM
2	Guide	Aluminum alloy
3	Spring gasket	Stainless steel
4	Chuck	POM
5	O-ring	NBR
6	Body	Brass
7	O-ring	NBR

Dimensions

GPC Series



Model/Item	ΦD	R	L	C	K	H(Across flat)	Weight(g)	PCS/bag
GPC6M5	6	M5×0.8	3.5	22.5	16.5	12	8.5	10
GPC601		G1/8	5.5	22	16.35	12	7.1	10
GPC602		G1/4	6.5	21	16.35	14	11.5	10
GPC603		G3/8	7	20.5	16.35	19	23.2	10
GPC604		G1/2	8.5	20.5	16.35	22	37.9	10
GPC801	8	G1/8	5.5	26	18.5	14	10.7	10
GPC802		G1/4	6.5	25	18.5	14	10.5	10
GPC803		G3/8	7	22	18.5	19	21.5	10
GPC804	G1/2	8.5	23.5	18.5	22	36.2	10	
GPC1001	10	G1/8	5.5	29.5	20.9	17	13.2	10
GPC1002		G1/4	6.5	29	20.9	17	15.8	10
GPC1003		G3/8	7	25	20.9	19	18.2	10
GPC1004		G1/2	8.5	23.5	20.9	22	30.7	10
GPC1201	12	G1/8	5.5	32	22.7	21	22.3	10
GPC1202		G1/4	6.5	33	22.7	21	25.4	10
GPC1203		G3/8	7	30.5	22.7	21	23.6	10
GPC1204		G1/2	8.5	27.5	22.7	22	31.7	10